



**WORLD'S BEST
ALLOY BULLBARS**

**Strongest Built
Australian Made
Lifetime Warranty**

PN: NB1DO15SY



**Fitting Guide &
Owners Manual
DODGE RAM 1500
LARAMIE 01/19 on**

100mm NUDGE BAR
VEHICLE FRONTAL PROTECTION SYSTEM (VFPS)
FOR AIR BAG & ADR COMPLIANT VEHICLES



Index

Pages 3-5

ECB's Benefits

Product Care

Pages 6-7

Stage 1 - Vehicle preparation

Stage 2 - Radiator cover

Stage 3 - Remove grille

Stages 4 to 6 - Remove lower bumper

Pages 8-9

Stage 7 - Remove tow hook

Stage 8 - Install steel mount

Stage 9 - Bumper bolts

Stage 10 - Parking sensors

Stages 11 to 12 - Bumper refit

Pages 10-11

Stage 13 - Bumper refit

Stage 14 - Fit parking sensors

Stage 15 - Install protection bar

Final Checks & Installation Kit

Pages 12-13

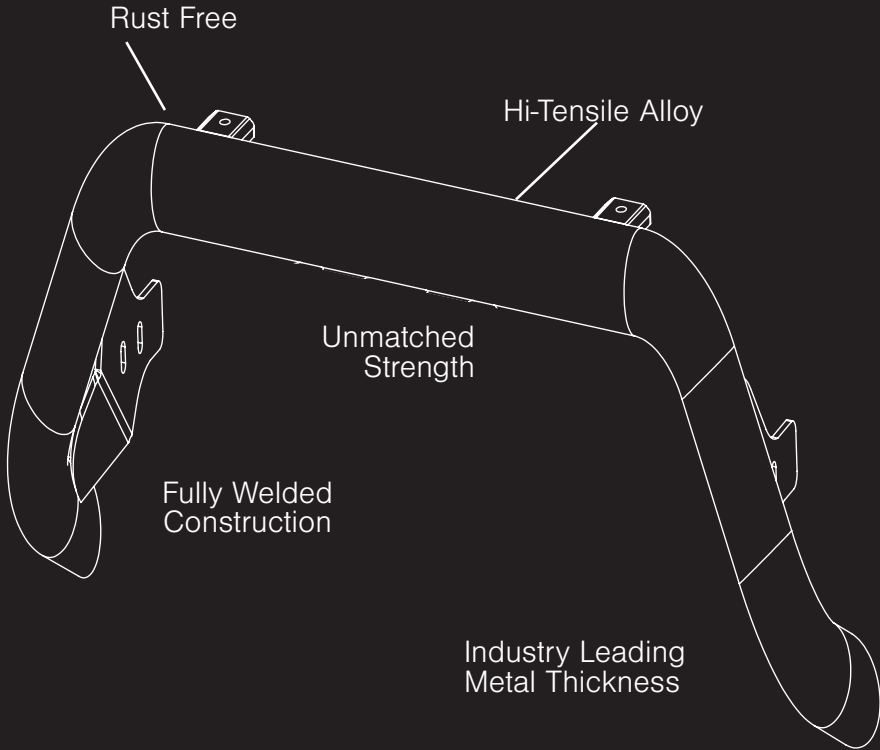
Finished Product

Warranty Registration

Pages 14-15

Notes

The Features of ECB



ECB's Benefits

Built to Perform - Not to a Price

ECB are proud to claim that their channels are not jigsaw puzzles that are bolted together, or even multiple sections welded together. Where any welding is required, it is done to the highest standards by qualified welders, not machines.

Anti-Corrosive Nature of Alloy

The composition of ECB's alloy has a very high resistance to corrosion. Rust not only looks unappealing but greatly reduces the strength of the metal. Rust can and will weaken the structural integrity of a steel bullbar effectively rendering it useless over time.

Australian Made

Established in 1971, we utilise decades of experience designing, engineering and building products in Australia to suit Australian conditions. We can ensure the best quality controls and help support the local economy and employ over 90 proud Australians.

Weight Saving Benefits

An ECB alloy bullbar is typically half the weight of a steel bullbar. Unnecessary suspension upgrades are not required. The reduced weight also contributes to increased fuel economy and less wear and tear on tyres, suspension and braking components.

Welds That Work

ECB uses only the strongest welds and welding techniques to ensure every product is as structurally sound as possible. MIG (Metal Inert Gas) welding techniques are employed ensuring the welds are as thick as the thickest section of alloy's being joined together.

Lifetime Warranty

ECB provide a lifetime warranty and consumer guarantee on all of our manufactured products. This guarantee highlights the confidence in our ability and provides complete peace of mind for your purchase for the lifetime you own your vehicle.

Product Care

Polished Products

Being a premium mirror polished finish, regular maintenance will be required to keep that iconic ECB shine. We recommend using our own brand of Aluminium Polish. This formula has been tried and tested and in our opinion is the world's best standard.

Directions: Apply a small quantity of Aluminium Polish to a clean soft cloth and rub the metal surface. The longer the rubbing the brighter the surface becomes. Wipe off Aluminium Polish with clean soft cloth. Also suitable for motorised buffing machines. **Note: There are more specific details on the polish bottle. Please read before use.**

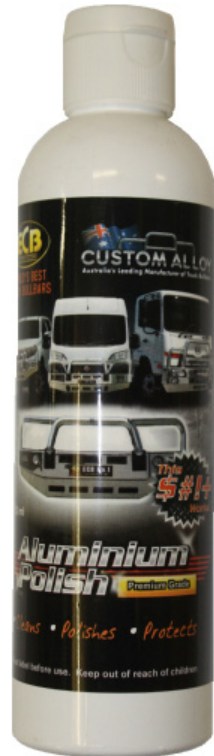
Powdercoated Products

Our powdercoated finishes are very low maintenance. In fact there is actually very little you will ever need to do for this product. Just clean it as you would your car and it will stay looking good as new.

ECB Aluminium Polish

When you're looking for that showroom finish look for your polished automotive products, you can depend on the no compromise quality of East Coast Bullbars Aluminium Polish. This specifically designed product is the best polish available and we guarantee that this \$#!+ works. Within our decades of manufacturing polished alloy products we have trialled a large range of different polishes on the market and believe without a doubt that nothing beats the finish quality of East Coast Bullbars Aluminium Polish.

East Coast Bullbars Aluminium Polish is excellent for use by hand and is ideal for polished bullbars, nudge bar and stainless steel products. This polish will clean, polish and protect your product from the elements whilst bringing your products back to that showroom finish look.



DODGE RAM 1500 LARAMIE 01/19on

Stage 1

- Test drive vehicle to ensure all driver assists are correctly working and to gauge effectiveness. Park on a flat level surface.
- Apply parking brake and lift bonnet.
- Unwrap ECB Protection bar and disconnect mounts. Discard bolts.
- Ensure these instructions are left with the vehicle owner and/or operator.



Stage 2

- Remove six (6) christmas tree plugs from radiator to trim and remove.



Stage 3

- Remove four (4) 10mm head bolts from top of grille.
- Loosen only, two (2) 8mm head bolts between headlight and outer stay on grille.
- Pull gently forward to remove.



100mm Nudge Bar

Stage 4

- From underside of bumper, remove three (3) 18mm head bolts from end of chassis rail (per side).



Stage 5

- Unplug wiring loom from passenger side inner wheel arch.
- Disconnect parking lamps.



Stage 6

- Pull bumper forward and down to remove.
- Plastic top of bumper remains on vehicle.



DODGE RAM 1500 LARAMIE 01/19on

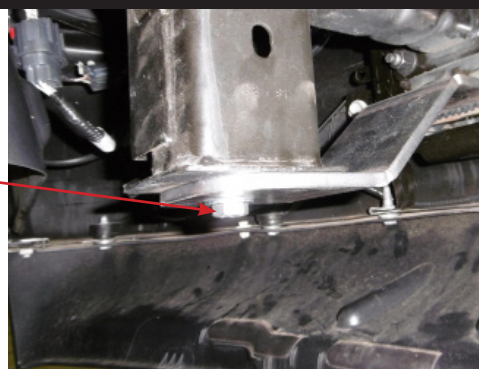
Stage 7

- Remove tow hooks from vehicle, one (1) 18mm head bolt from rear of towhook.



Stage 8

- Fit steel mounting bracket (supplied) onto end of chassis rail and fix with M12 x 1.5 x 35mm bolt, spring washer and flat washer at rear of mount into captive nut.
- **Finger tighten only.**



Stage 9

- Remove two (2) lower bolts from bumper reinforcement (per side).
- Remove plastic trim from around tow hook opening in bumper, four (4) 10mm head bolts.

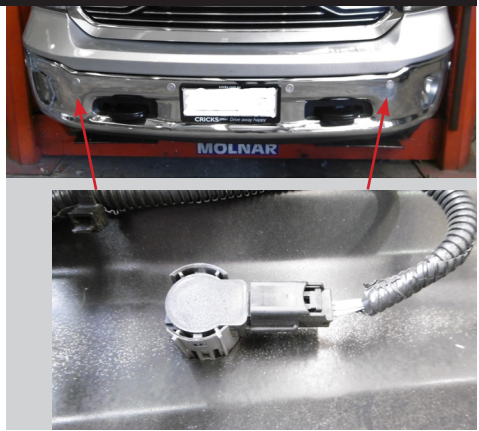


100mm Nudge Bar

Stage 10

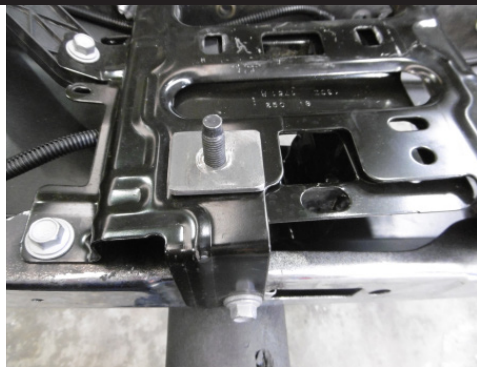
- Remove 2nd and 5th bumper sensors from the housing (per side).
- Extend wiring loom using extension wire and solder joiners (supplied). Place wiring through sensor housing while extending.
- Place wiring into convoluted tubing (supplied).

NOTE: Ensure wiring is extended correctly. If wires are crossed at this point the system will not work correctly.



Stage 11

- Fit 40 x 40 x 6mm spacer (supplied) on top bolt in bumper reinforcement.
- Refit bumper to vehicle with ECB steel mounting brackets protruding through tow hook openings.
- Install original nut to top bolt. **Finger tighten only.**



Stage 12

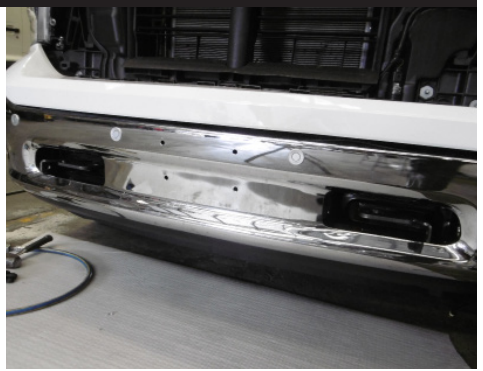
- Fit original bolts in lower holes of reinforcement and ECB steel mounting brackets.
- Align outer width mounts to correct width according to inner measurement of protection bar.
- **Tighten all bolts.**
- Connect all wiring.



DODGE RAM 1500 LARAMIE 01/19on

Stage 13

- Refit grille to vehicle as per reverse of steps 2 to 3.



Stage 14

- Fit parking sensors into ECB plastic sensor housing until front of sensor is level with front. Ensure silicon ring on front of sensor sits in front of opening.
- Connect parking sensors to wiring and cover wiring with conduit (supplied).
- Using a cable tie (supplied) secure sensor in second hole on housing legs.
- **CAUTION** - Cable tie is for sensor security only. Overtightening zip ties could cause sensors to malfunction.



Stage 15

- Fit protection bar to vehicle and fix with four M10 x 1.5 x 40mm bolts, flat washers, spring washers and nuts (supplied).
- Align protection bar with vehicle.
- **Tighten all bolts.**
- Check sensors for correct operation.



Final Checks & Installation Kit

Ensure Number Plate is Clearly Visible

Note: When fitting/refitting the licence plate to the vehicle, ensure there is no obstruction to licence plate vision in accordance with local authorities. If required relocate licence plate to an alternate location.

Further VFPS Notes

1. Do not attach VFPS to the vehicle using anchorages not intended for this purpose (e.g. engine mounting bolts).
2. Do not use this product for any vehicle make or model, other than those specified by the VFPS manufacturer.
3. Do not remove the plaque or label from the VFPS.
4. Do not modify the structure of the VFPS in any way.
5. No accessory or fitment should project forward of the VFPS forward profile.
6. **Ensure these instructions are left with the vehicle owner and/or operator.**

Important Information

Periodically check bolts and nuts for correct tightness, especially if traveling on rough roads.

Installation Kit

1 - Pair ECB steel mounting brackets	4 - M10 spring washers
2 - 40 x 40 x 6 (11mm hole) square alloy washer	4 - M10 x 1.5 nuts
2 - M12 x 1.5 x 35mm bolt	6 - 300mm lengths single core wire
2 - M12 flat washer	12 - Solder joiners
2 - M12 spring washer	2 - 300mm lengths convoluted tubing
4 - M10 x 1.5 x 40mm bolts	2 - 150mm length cable ties
8 - M10 flat washers	

Finished Product



Warranty Registration

Contact Details

Name: _____

Address: _____

Product: **NB1D015SY** _____

Email: _____

Phone: _____

Work Order Number: _____

You can find this on the silver label
of your ECB product.

By submitting this registration you automatically subscribe to ECB's mail outs. You can
unsubscribe at any time.

Register Online

For online registration please go online to www.ecb.com.au/warranty-registration If you
have any questions please contact our national office on 1800 069 145 or www.ecb.com.au.



PN: NB1DO15SY
Please post to PO Box 122,
Margate QLD 4019

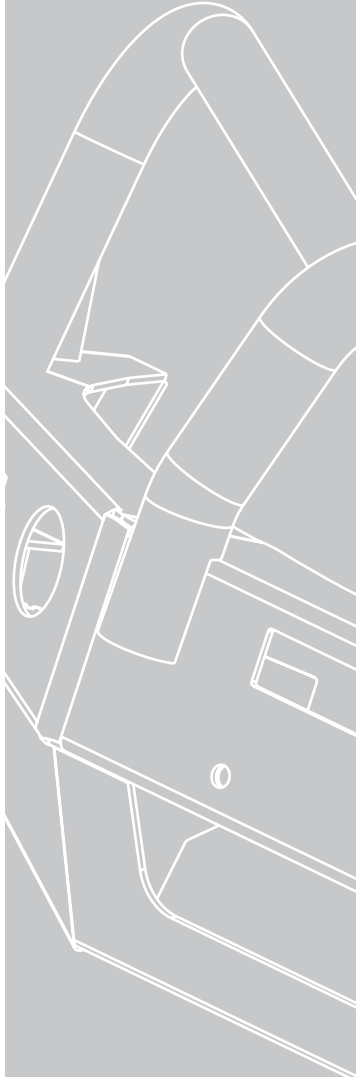
REPLACES: 08.04.19

REVISED: 18.08.21

Revisions

10/03/21 - logo and general info updates JL

18.08.21 - Change to wording and addition of pics to Stage
10 - Kevin Aland



1800 069 145
www.ecb.com.au

**Strongest Built
Australian Made
Lifetime Warranty**

29 Snook St, Clontarf QLD 4019
PO Box 122, Margate QLD 4019